



Acromech

E N G I N E E R I N G

ADVANCED
BUILDING SOLUTIONS

REBAR

COUPLER



STRENGTHENING
CONNECTIONS,
BUILDING
FUTURER

WHO WE ARE ?

Acromech Engineering, a premier manufacturer of high-quality rebar couplers. Our innovative solutions ensure superior reinforcement and seamless connections for your construction projects. With a commitment to excellence and reliability, we provide state-of-the-art products that meet the highest industry standards. Trust us to strengthen your structures with precision-engineered rebar couplers.

Founded as a partnership firm in 2020, "ACROMECH ENGINEERING" is a prominent manufacturer specializing in a wide range of Rebar Couplers and Parallel Threaded Couplers. Based in Rajkot (Gujarat, India), we have established a comprehensive and efficient infrastructure that significantly contributes to our company's growth.



The Acromech Engineering upset rebar coupler is ideal for large-scale projects. Our system features parallel threading for reinforcing bars with diameters ranging from 12 mm to 50 mm. It is fully equipped to create a strong, reliable joint in rebar connections. Our customers are central to our operations. We pay close attention to their needs, grasp their challenges, and collaborate to provide customized engineering solutions that go beyond their expectations.

OUR VISION

We aim to enhance every life we touch by adding sustainable value in all our focus areas, driven by a business mentality rooted in entrepreneurship, innovation, and reliability.

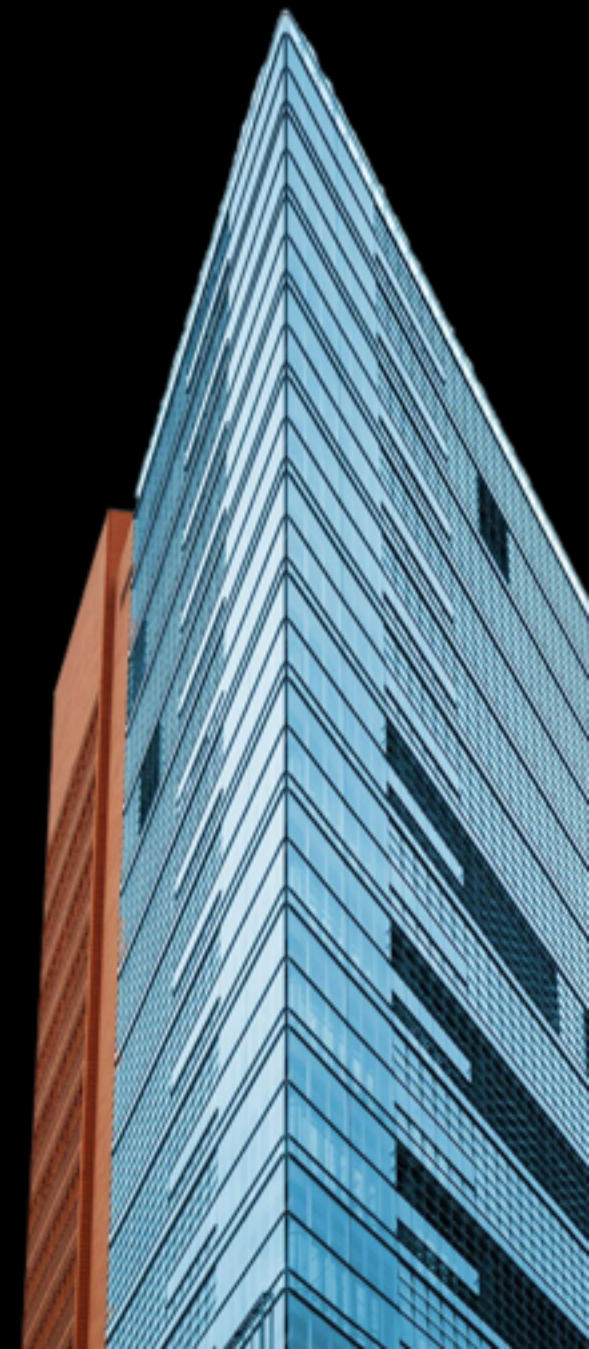
OUR MISSION

We strive to create value for humanity and the economy while respecting the environment and our competitors. With an enterprising and leading spirit, we aim to be part of the most successful international groups. Our goal is to contribute to the enrichment of our country and the regions where we operate.

VALUES

We understand our customers needs, and our main goal is to give them the highest and most reliable product quality possible.

- *Customer Recognition*
- *Integrity & Transparency*
- *Passion for results*
- *Creativity & Agility*
- *Commitment & Accountability*



QUALITY

At Acromech Engineering, we are committed to delivering the highest quality rebar couplers that meet and exceed industry standards. Our rigorous quality assurance processes ensure that our products provide exceptional performance, safety, and reliability in every application. Here's how we maintain our commitment to quality:

SUPERIOR DESIGN & MANUFACTURING

Our rebar couplers are engineered with precision to ensure optimal strength and durability. Utilizing the latest technology and high-grade materials, our design and manufacturing processes adhere to stringent quality control measures. Each product undergoes thorough testing to ensure it meets our exacting standards.

COMPREHENSIVE TESTING PROCEDURES

Quality is verified through a series of comprehensive tests, including:

- *Tensile Strength Test*
- *High Cycle Fatigue Test*
- *Low Cycle Fatigue Test*
- *Pull Out Test*
- *Cyclic Test*
- *Slip Test to ensure the best quality needed.*

COMPLIANCE WITH INDUSTRY STANDARDS

Our products comply with national and international standards, including:

- *ISO 9001: Quality Management Systems*
- *ASTM A108: Standard Specification for Steel Bar, Carbon, Cold-Finished, Standard Quality*
- *BS 8110: Structural Use of Concrete Code of Practice*

QUALITY

SUSTAINABLE PRACTICES

We adopt sustainable manufacturing practices, minimizing waste and energy consumption while ensuring our products contribute to the durability and longevity of your constructions.

CONTINUOUS IMPROVEMENT

We believe in continuous improvement to enhance our product quality and customer satisfaction. Through ongoing research and development, we constantly refine our manufacturing processes and product designs. Feedback from our clients and field performance data drives our innovation, ensuring that we stay at the forefront of industry advancements.



CUSTOMER SATISFACTION

Your satisfaction is our ultimate goal. We are committed to providing high-quality rebar couplers that you can trust, backed by exceptional customer service. Our quality assurance extends beyond product delivery, ensuring that you receive support throughout the lifecycle of your project.



GENERAL BENEFITS OF REBAR COUPLERS

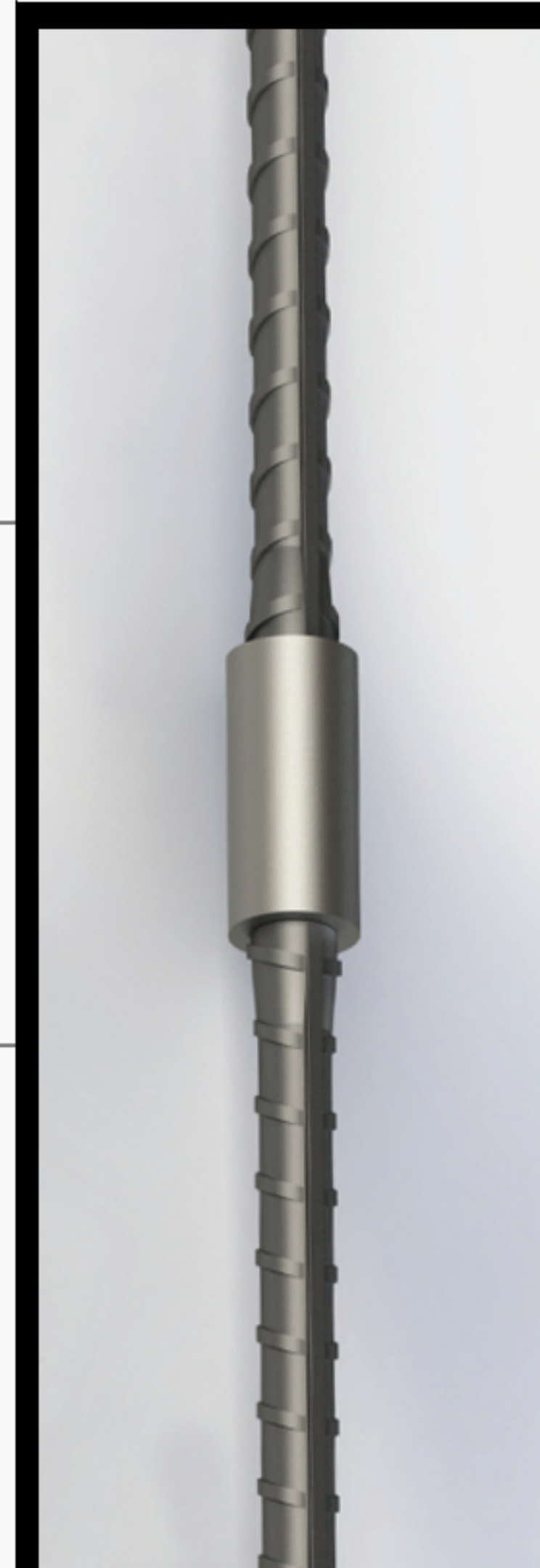
Mechanical rebar couplers are becoming more popular than lap splices among engineers. Mechanical couplings, they discovered, provide a level of uniformity and reliability that lap splicing does not.

- 1** Because they do not rely on concrete for load transfer, mechanical systems are more reliable than lap systems.
- 2** Bar terminators reduce traffic & make bar placement easier.

3 Mechanical connections provide more structural stability. During man-made, seismic, or other natural phenomena, mechanical splices provide strength and toughness.

...

4 Mechanical splices must perform better than conventional lap splice design lengths, according to the code. Mechanical splices often provide a 125 percent to 150 percent more capacity* than the lap splice



GENERAL BENEFITS OF REBAR COUPLERS

5 Rebar couplers save money by lowering labour expenses and speeding up job schedules.

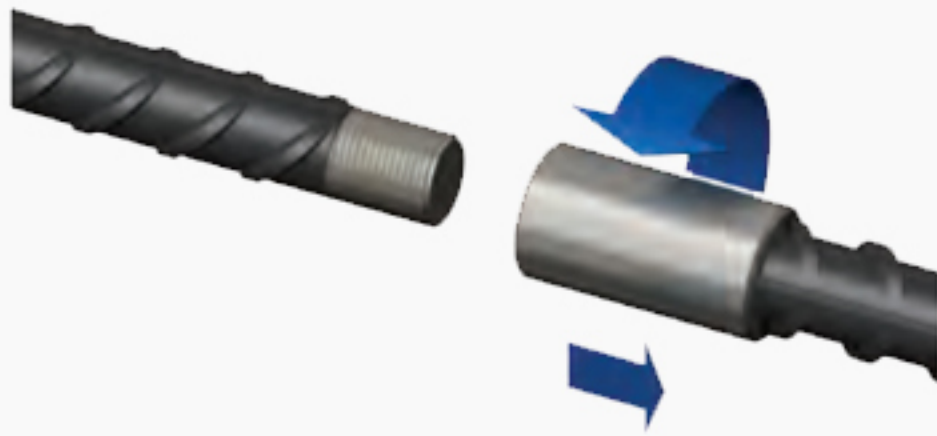
6 Repair splices save money by avoiding the expense of removing large amounts of concrete.

7 Dowel bar alternatives minimize on-site labour, formwork costs, and project-site safety.

8 The Rebar Coupler eliminates the need for time-consuming lap computations. Rebar Couplers are simple to install and do not necessitate the use of specialized labour.



1



Screw the coupler to the rear of the thread on the continuation bar.

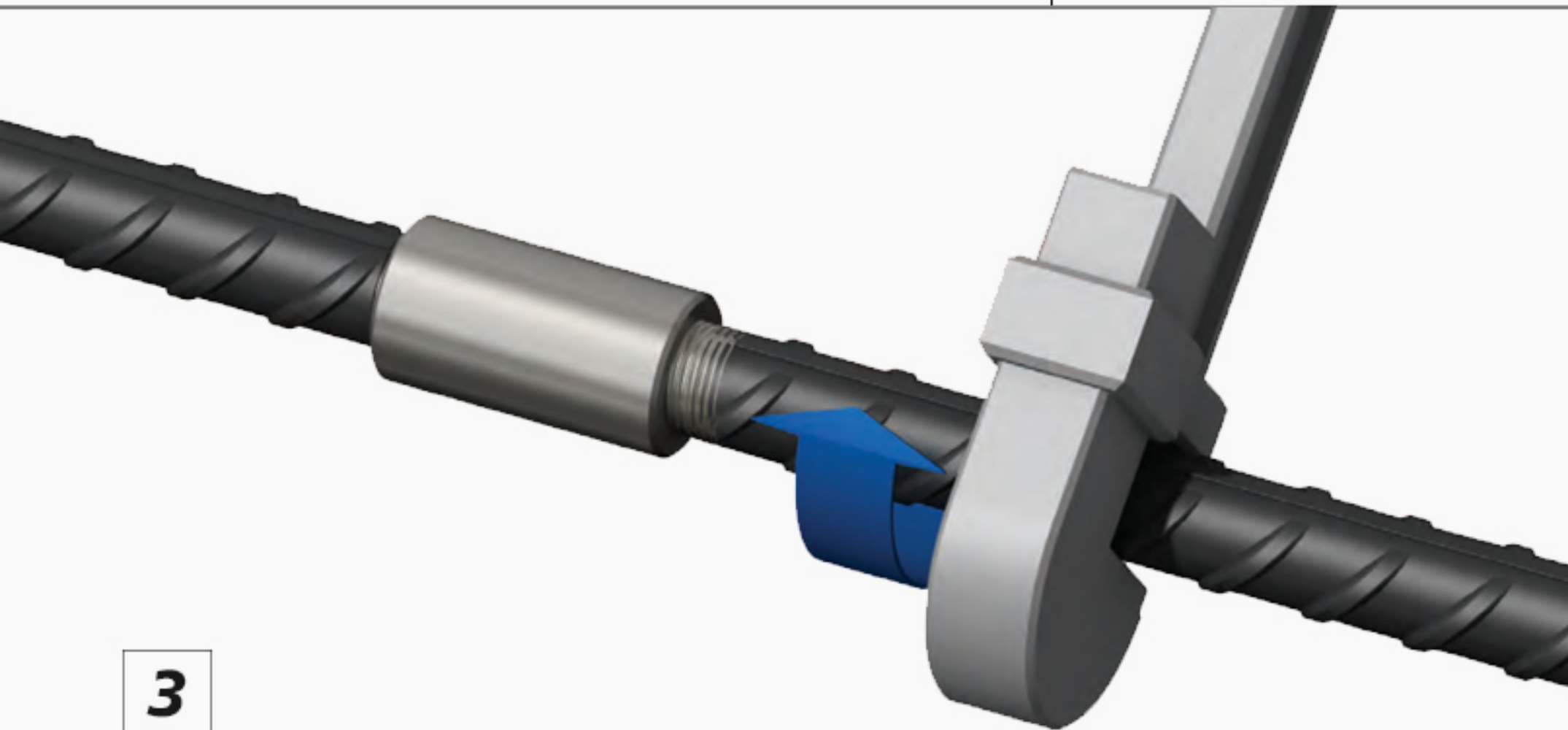
2



Position the continuation bar with the coupler against the end of the first bar.

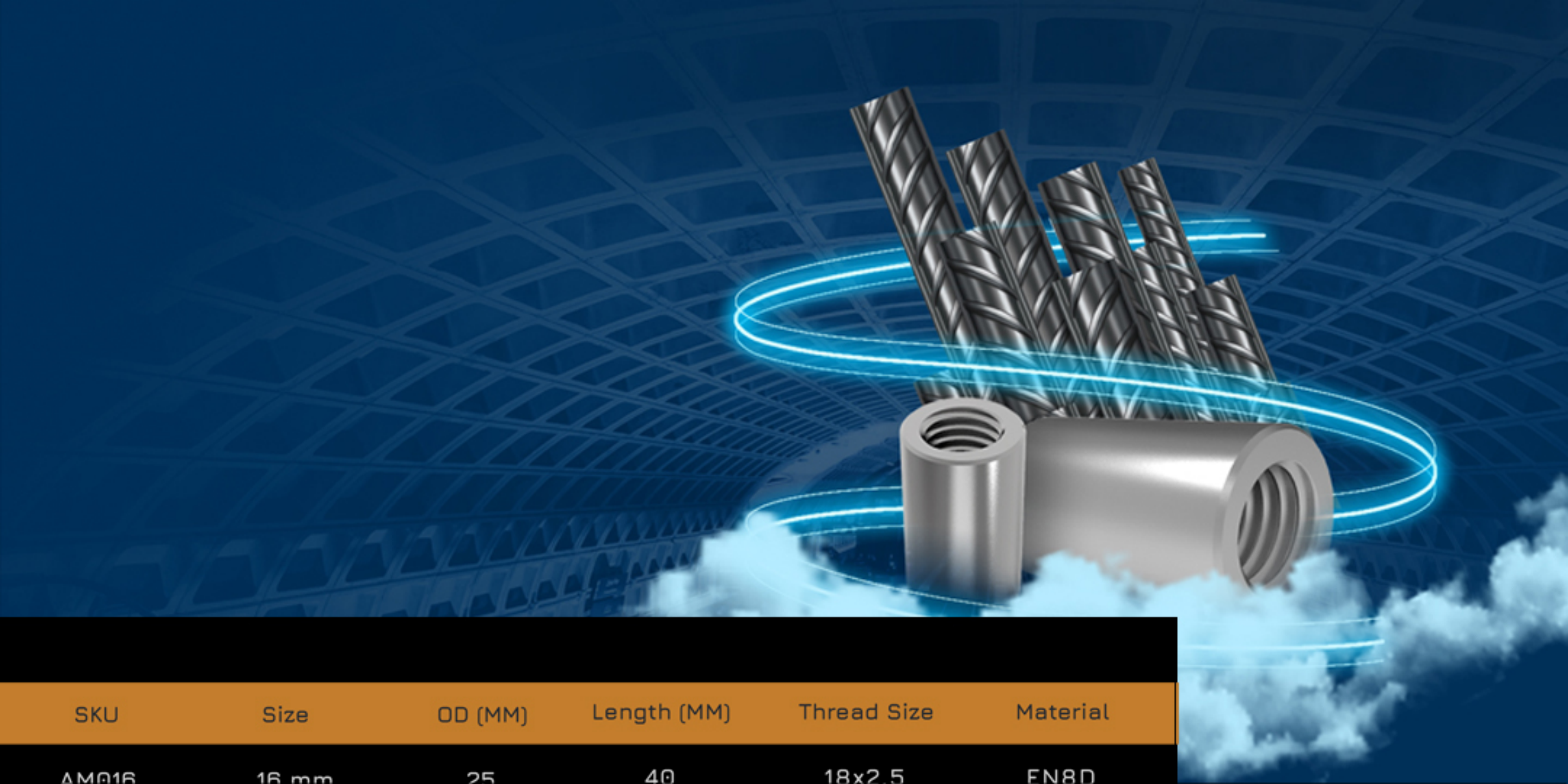
...

3



Using a wrench, rotate the continuation bar to lock the two bar ends against each other within the coupler. After tightening, the length of exposed thread should be no more than half of the coupler length plus 2-4mm depending on the diameter of the rebar.

INSTALLATION



SKU	Size	OD (MM)	Length (MM)	Thread Size	Material
AM016	16 mm	25	40	18x2.5	EN8D
AM020	20 mm	32	54	23x2.5	EN8D
AM025	25 mm	42	64	29x3.0	EN8D
AM032	32 mm	50	78	35x3.0	EN8D
AM040	40 mm	62	95	45x4.0	EN8D

SIZE CHART



HOW
**REBAR
COUPLER**
IS USEFUL ON
DIFFERENT PREMISES?

BRIDGES & VIADUCTS

Acromech Engineering provides couplers for the building of bridges and viaducts that can be utilized in both permanent and temporary applications. Our product line includes a rebar coupler, as well as all necessary accessories for applications such as heavy structure and temporary heavy-lifting activities



AIRPORT

Acromech's renowned coupler systems, utilized in foundations, columns, and slabs, are part of technological solutions for airports. We extend our services to include huge roofing structures and façades.

BUILDINGS

In building, reinforced glass, and many other items, Eminent's renowned rebar coupler provides considerably stronger support than steel wires.

BUS PORTS & TRAIN STATIONS

Acromech's Coupler is useful in joining the new trains of a railway. Because flexibility and convenience are maximized if all new trains can be coupled together, the coupler design is standard and almost as important as the track width.

**STRENGTHENING CONNECTIONS,
BUILDING FUTURES**

Acromech
ENGINEERING

CONTACT

Acromech Engineering ,
Nilkanth Industries, Varun Main Road,
Opp. Gopal Hotel, Dhebar Road (South),
Rajkot, Gujarat.



+91 9723312368



info@acromech.com



WWW.ACROMECH.COM

